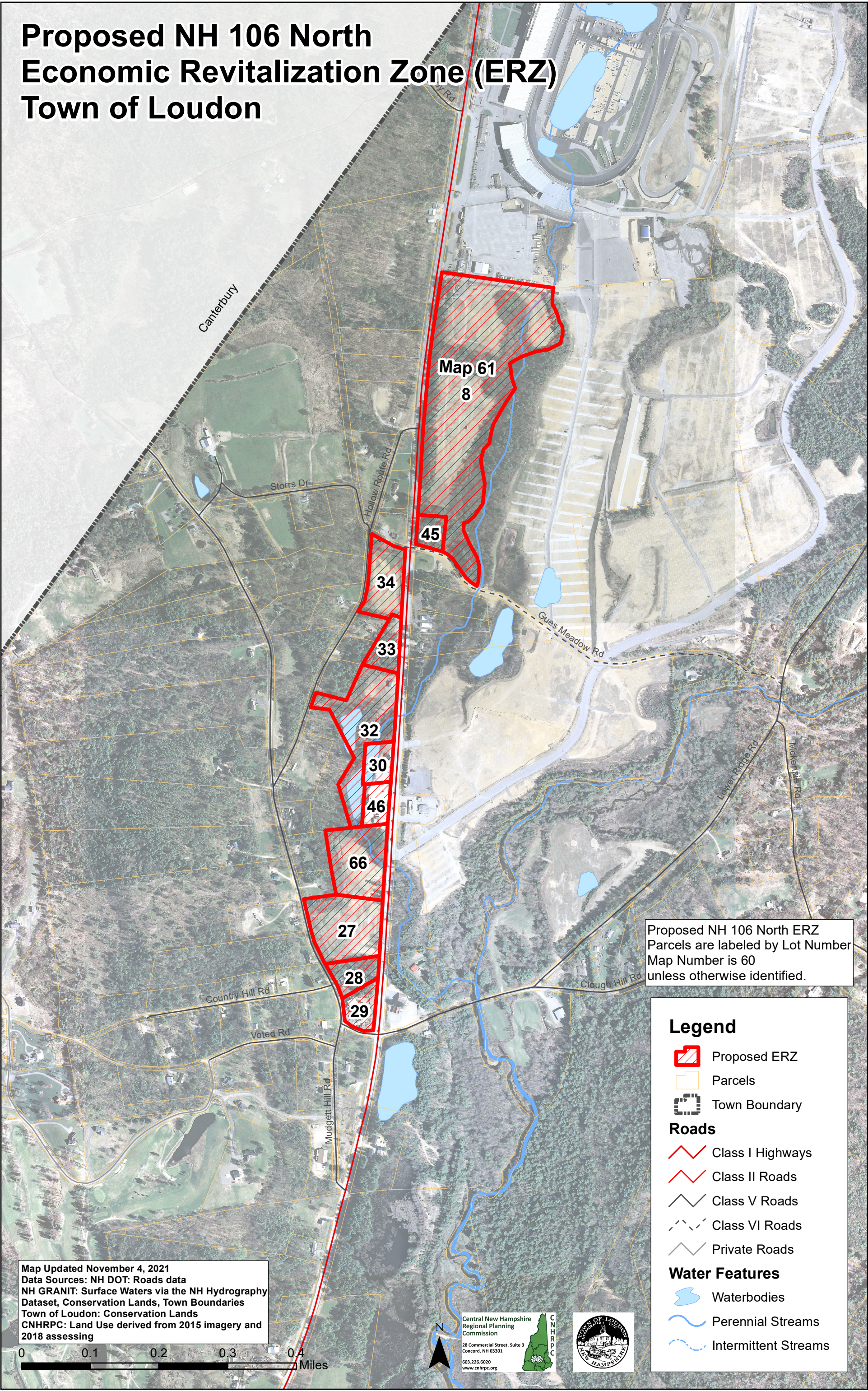


# Proposed NH 106 North Economic Revitalization Zone (ERZ) Town of Loudon



Map Updated November 4, 2021  
Data Sources: NH DOT: Roads data  
NH GRANIT: Surface Waters via the NH Hydrography Dataset, Conservation Lands, Town Boundaries  
Town of Loudon: Conservation Lands  
CNHRPC: Land Use derived from 2015 imagery and 2018 assessing

Proposed NH 106 North ERZ  
Parcels are labeled by Lot Number  
Map Number is 60  
unless otherwise identified.

### Legend

- Proposed ERZ
- Parcels
- Town Boundary
- Roads**
- Class I Highways
- Class II Roads
- Class V Roads
- Class VI Roads
- Private Roads

### Water Features

- Waterbodies
- Perennial Streams
- Intermittent Streams

Central New Hampshire  
Regional Planning  
Commission  
28 Commercial Street, Suite 3  
Concord, NH 03301  
603.226.6020  
www.cnhrpc.org

