

**LOVEJOY TRAILS KIOSK WORK  
INTERSECTION MAPS AND ARROWS  
FIXING STONEWALL CROSSING  
10-26-2019**

On Friday, Oct. 26<sup>th</sup> at 8:30 am, a group of the Loudon Trails Committee met at the parking lot leading to the Lovejoy Trails for the purpose of working on the kiosk Matt Morris had built and also to walk the trails and affix maps to backboards, as well as arrows along the trails wherever they were needed. The day was mostly overcast but cool, ideal conditions for working. Martha Butterfield walked over from her home across the way so she could take photos of the group and assist with signs.



Bob Lyons, Denis Proulx, Sandy Blanchard, Matt Morris, Nancy Huckins and Laura Vincent were able to easily park their vehicles in the parking lot with lots of room to spare.

Everyone was surprised and pleased at how roomy the parking lot had become, thanks to Harry MacLauchlan's excellent work in smoothing out the 30 cu. yards of gravel generously donated by Fillmore Industries.



All of the members were admiring Matt's workmanship on his ruggedly-constructed kiosk. It stood out very well next to the main trail's entrance.

The group spent a few minutes going over the various work materials, including wooden shingles Sandy had brought in her truck and deciding on methods of fastening several maps to backboards that had been painted red and previously put up by Sandy and Craig Mabie at all the intersections along the trails. Sandy had also painted some white wooden arrows the previous night, and they were ready to be put up anywhere along the trails where they were needed. Matt planned to affix the wooden shingles to the roof of the kiosk.



It was decided that Sandy would remain with Matt at the Kiosk to assist him in his work, while Bob, Denis, Martha, Nancy and Laura would head off on the trails for the remainder of the work that needed to be done. Denis had planned to attach screws to

the seven intersection maps his wife Deb Eastman-Proulx had laminated ahead of time. Martha kept the maps in order and held them in her backpack.

As the group walked the trails, they were pleased to see how well Craig Mabie had raked different areas so walkers would easily find their way. That day, they met up at different times with two residents from the nearby Memory Lane: a woman who was walking her dog and a young man who'd hunted there previously and walked there daily. Each one remarked how often they appreciated the condition of the trails while visiting there. More and more, the Lovejoy Trails were bringing joy to the surrounding neighborhood.

As they walked up the hill leading to the rangeway, Bob's chainsaw work came into view, as he explained that a huge aspen tree had become uprooted and had fallen from the northeast completely across the 'fern hill trail'. He had cut it up and rolled the large pieces out of the way from the path, making it clear again. And so it was throughout the entire trail system that Bob with his chainsaw and Craig with his handsaw had gone out at different times and cleaned all the debris away from the heavy rains and windstorm that had hit the Lovejoy Trails several days before. Hats off to them for all of their hard work!



The "You Are Here" maps were placed in the following spots: at the intersection at the beginning of the White Trail Loop, each of the entrances to the Blue Highland Trail Loop, the intersection of the Blue Highland Trail and the Red Steep Trail, the intersection between the upper White Trail Loop and the Connector Trail, the lower forest trail where the White Trail Loop intersects with the Red Steep Trail and the intersection between the lower forest White Trail Loop and the Connector Trail.



As Denis began affixing the maps to the backboards, he made the decision to place just two screws to hold the maps because he planned to come back another day and replace them with ones that held the maps better, as the markings for the screws were different from the placings on the backboards.

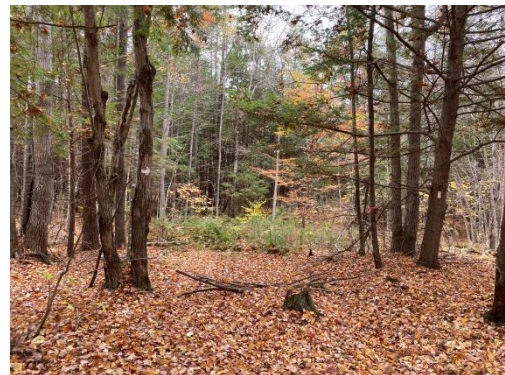


Along the way, Bob and Denis also affixed Sandy's white arrows wherever the trails took abrupt turns to the right or left so walkers wouldn't be confused about the way to go forward.



After descending the Blue Trail, Laura Vincent and Nancy Huckins turned right and returned to the parking lot while Bob, Denis, and Martha turned left to continue putting up signs around the rest of the White Loop.

One particularly challenging area was a section of the upper forest on the White Trail Loop. Years ago, a logging operation had cut into the hillside as it headed down the hill and thus created ruts and wet spots much of the year. For that reason, a month or two earlier when the trail was still in the planning stages of being cut, Bob Lyon determined the new hiking trail would need to be re-routed toward the east and on the other side of a stone wall where the ground tended to be higher and drier than on the old logging trail.



That meant that when looking northward down the hill while on the upper forest trail, the path must then turn toward the right, as indicated in the top photo where a white arrow was painted on the tree to guide the walker in the proper eastward direction. From there, the path leads to a low point in the stone wall, crosses over the rocks there and heads abruptly downhill toward the left and on the east side of the stone wall.

Denis and Bob determined where white arrows would need to be attached to two trees showing the proper direction to follow when heading downhill toward the north or uphill toward the south. It was also apparent to them that the stones would need to be rearranged for safe crossing, as in their current condition they could pose a hazard to hikers.



The men began pulling out the heavy stones and rearranging them, as well as adding some others from other areas of the stone wall. Soon, they had achieved a much safer crossing, but they also planned to return another day and add some nearby dirt and sand to the crossing to make it smoother and firmer.

As Bob, Denis and Martha headed back along the White Trail Loop, they soon met up with Sandy who explained that Matt had to leave for an appointment but would return later to complete working on the kiosk. As they arrived back at the parking lot, they were pleased at how much had been accomplished by Matt and Sandy while they were working in the forest. Matt had attached



the flashing on the roof, and the plexiglas had also been attached, allowing them to insert the large trail map that Craig Tufts of Central New Hampshire Regional Planning Commission had created. Martha's two-page write up "About the Lovejoy Trails and the Hunting Swamp" was also stapled in place, along with a list of all the people who'd volunteered their time and materials to the project.

As it was 11:30 by then, the remainder of the group left to go home, and Martha planned to return later on to see if Matt had returned. After 45 minutes, she found Matt had returned and took some more photos of him at work. She was impressed by what he'd gotten done and also admired the wooden shingles he'd placed on the roof. Matt had to leave for lunch but would return later. As the time remaining for Matt to complete the job was not yet determined and would be added when he was finished, Martha estimated that the total hours of volunteer work amounted to 20 – 24 hours that day.

A sign "Lovejoy Trails" would soon be added to the kiosk to complete its appearance. And only a few other small details along the trails remained of an exciting project that started in the spring and ended in the autumn of 2019, but always with perpetual maintenance. It had been a wonderful venture, and thanks to all who contributed to making the Lovejoy Trails a beautiful place to visit for many years to come.



Martha Butterfield 10/26/19