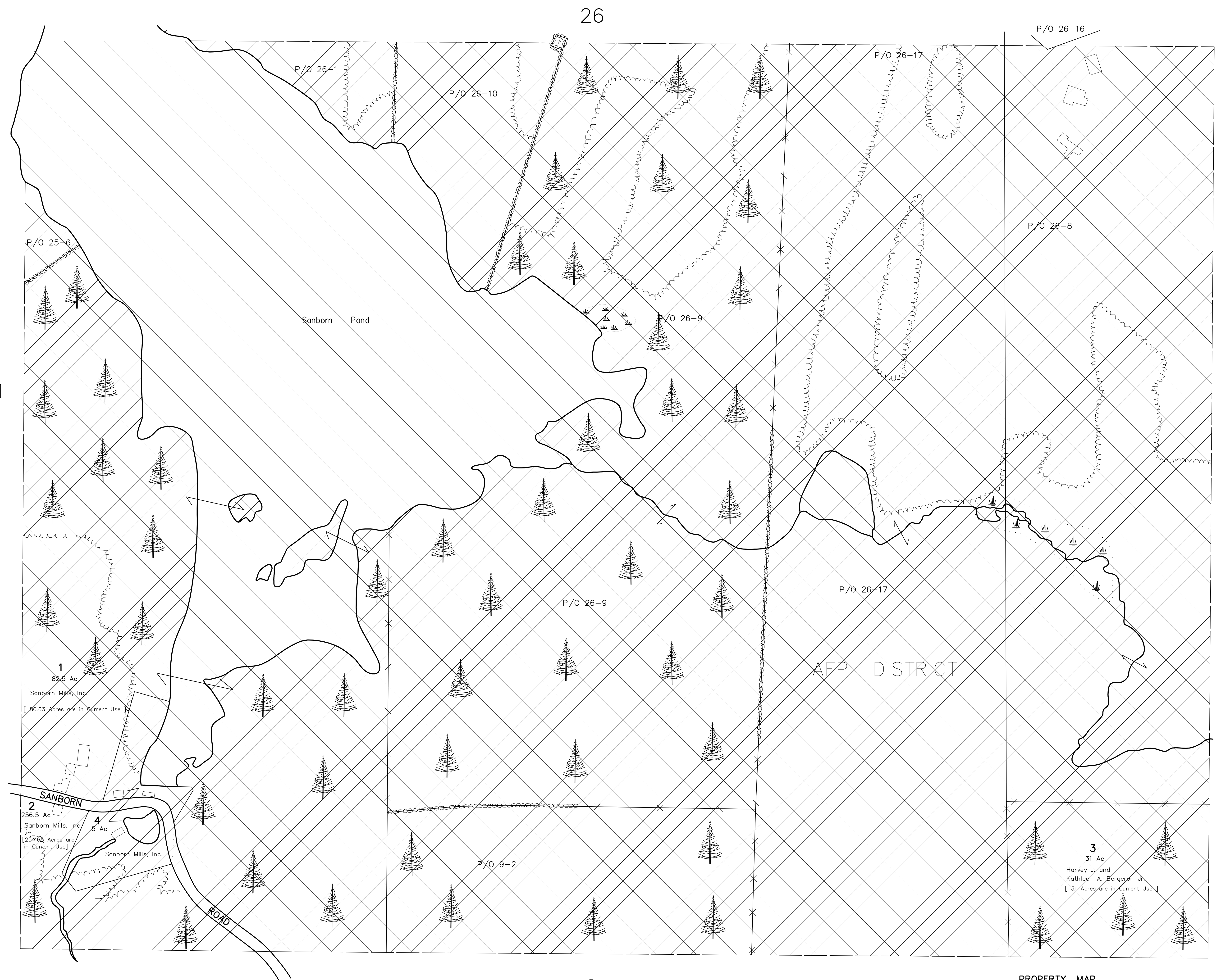


LEGEND

- STONEWALLS
- WETLAND
- SAME OWNER ON EACH SIDE OF THE LINE
- CURRENT USE
- C/I ZONING DISTRICT
- VILLAGE ZONING DISTRICT
- AFP ZONING DISTRICT
- CONSERVATION EASEMENT



REVISED AND REPRINTED BY
CAI TECHNOLOGIES

RR DISTRICT

For Assessment Purposes
Not to be used for Conveyances

PROPERTY MAP
TOWN OF LOUDON
MERRIMACK COUNTY, NEW HAMPSHIRE
PREPARED BY:
JAMES W. SEWALL COMPANY
SCALE: 1 INCH = 200 FEET