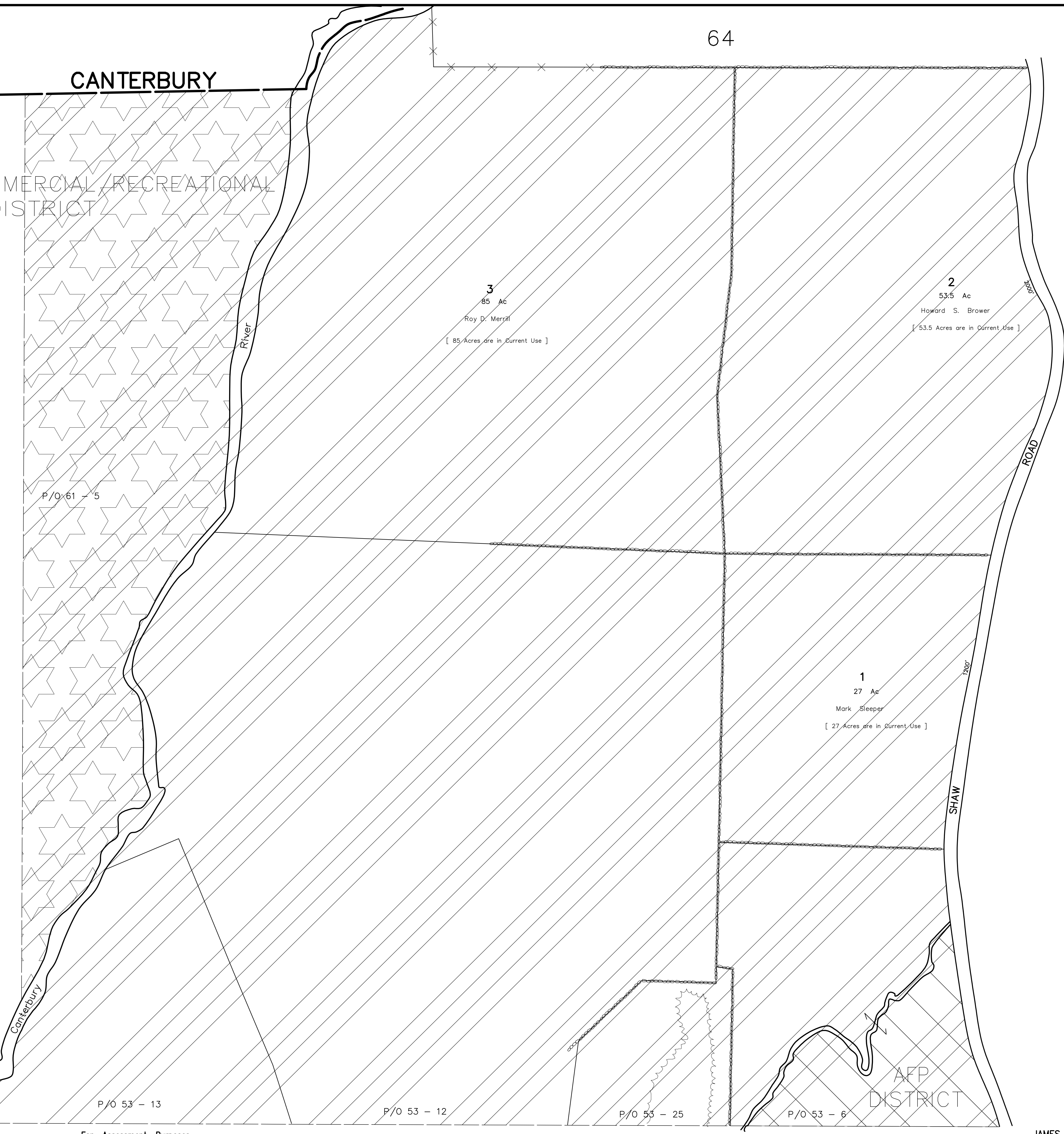


CANTERBURY
COMMERCIAL/RECREATIONAL
DISTRICT

61



LEGEND

- STONEWALLS
- WETLAND
- SAME OWNER ON EACH SIDE OF THE LINE
- CURRENT USE
- C/I ZONING DISTRICT
- VILLAGE ZONING DISTRICT
- AFP ZONING DISTRICT
- CONSERVATION EASEMENT

63

REVISED AND REPRINTED BY
CAI TECHNOLOGIES

For Assessment Purposes
Not to be used for Conveyances

53

PROPERTY MAP
TOWN OF LOUDON
MERRIMACK COUNTY, NEW HAMPSHIRE
PREPARED BY:
JAMES W. SEWALL COMPANY OLD TOWN MAINE
SCALE: 1 INCH = 200 FEET

62